

## CLIP-TOGETHER CT with plug-in short circuit link

### DESCRIPTION

Split-core current transformer with a unique plug-in short circuit link. Supplied in a moulded case with double insulated flying lead and bootlace ferrule terminations.

### APPLICATION

For installation into existing networks without the need to disconnect cable circuits. The inbuilt plug-in short circuit link allows the CT to be installed in complete safety. The CT will not operate until the plug-in link is removed.



### SPECIFICATIONS

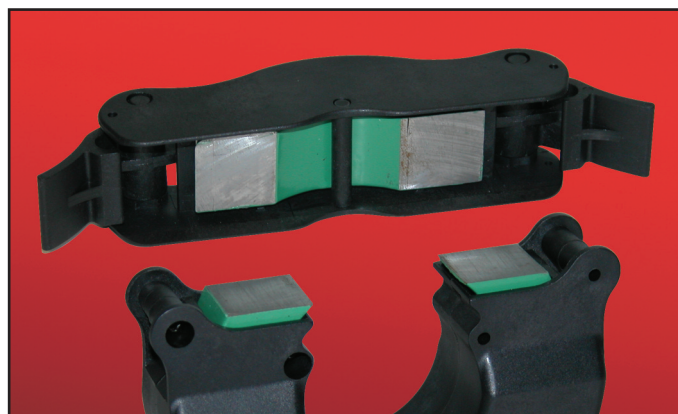
- Conforms to IEC 185, BS 7626, BSEN 60044-1, IEC 60044-1 and IEC 61869-2.
- Rated system voltage 0.72/3kV.
- Ambient temperature range -5°C to +50°C.
- Frequency range 50-60Hz.
- Insulation level 3kV for 1 minute.
- Continuous current, 1.2 x rated current.
- Enclosure flame retardancy UL94V0.

### RANGE

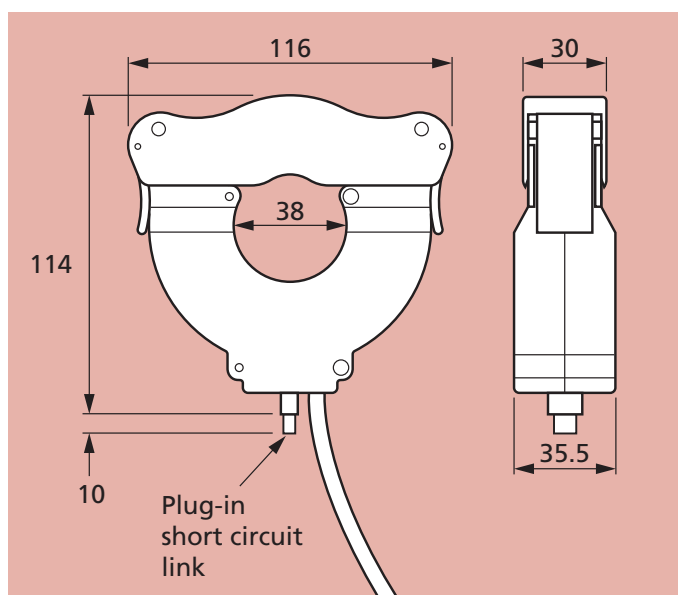
Primary Current	VA	CLASS
100A*	1 (2.5)	1 (3)
150A*	1.5 (2.5)	1 (3)
200A**	2.5	1
250A**	2.5	1
300A**	2.5	1
400A**	5	1
500A**	5	1
600A**	5	1
800A**	5	1

\* Supplied with 1 metre long flying lead.

\*\* Supplied with 5 metre long flying lead.



### DIMENSIONS (mm)



Our policy is one of continuous development and therefore specifications may change without notice.

## HOWARD BUTLER LTD

CROWN WORKS, LINCOLN ROAD  
WALSALL WS1 2EB ENGLAND

Tel: 01922 640003 Fax: 01922 723626

International Tel: +44 1922 640003 E-mail: sales@hobut.co.uk

<http://www.hobut.co.uk>